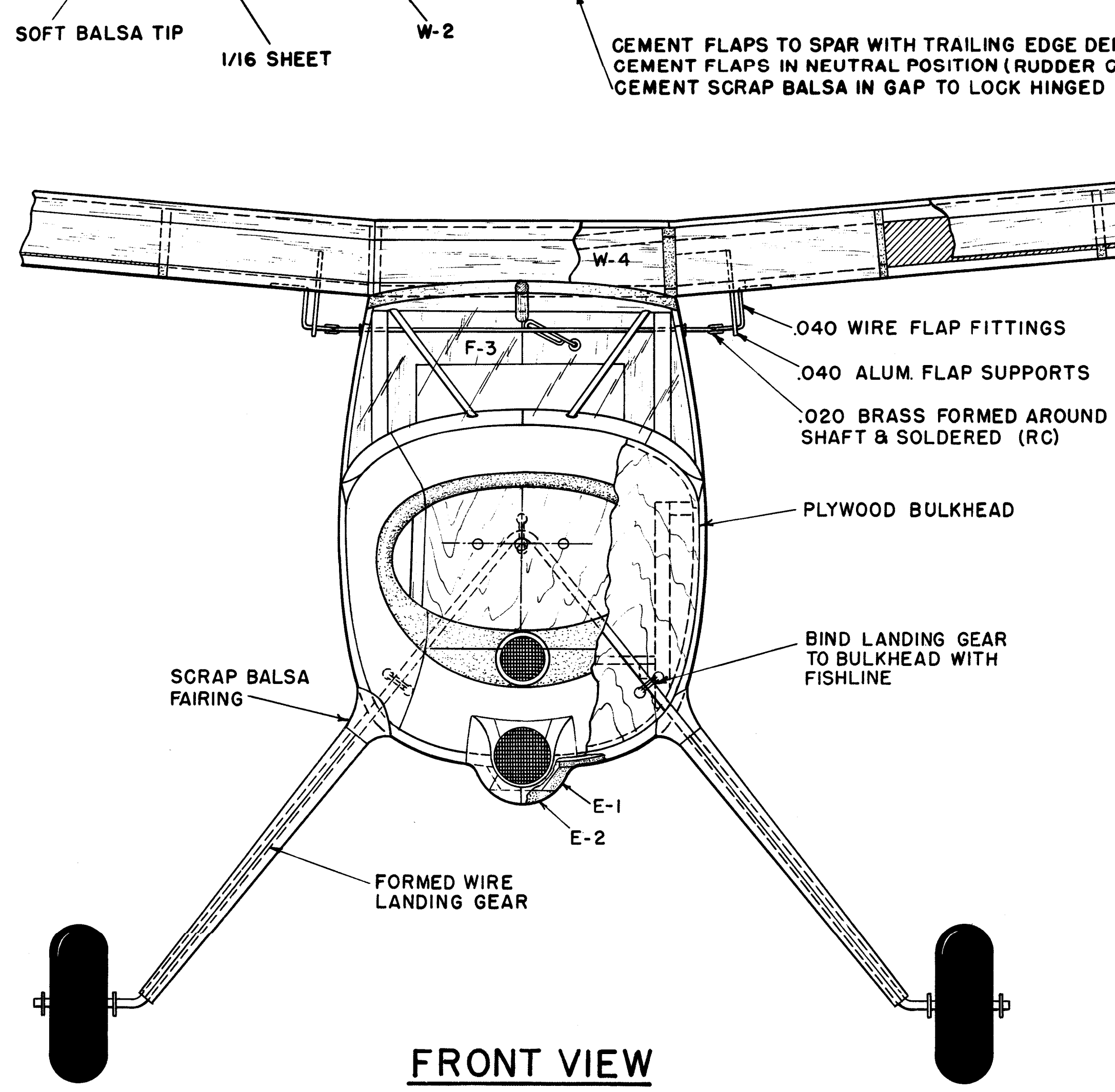
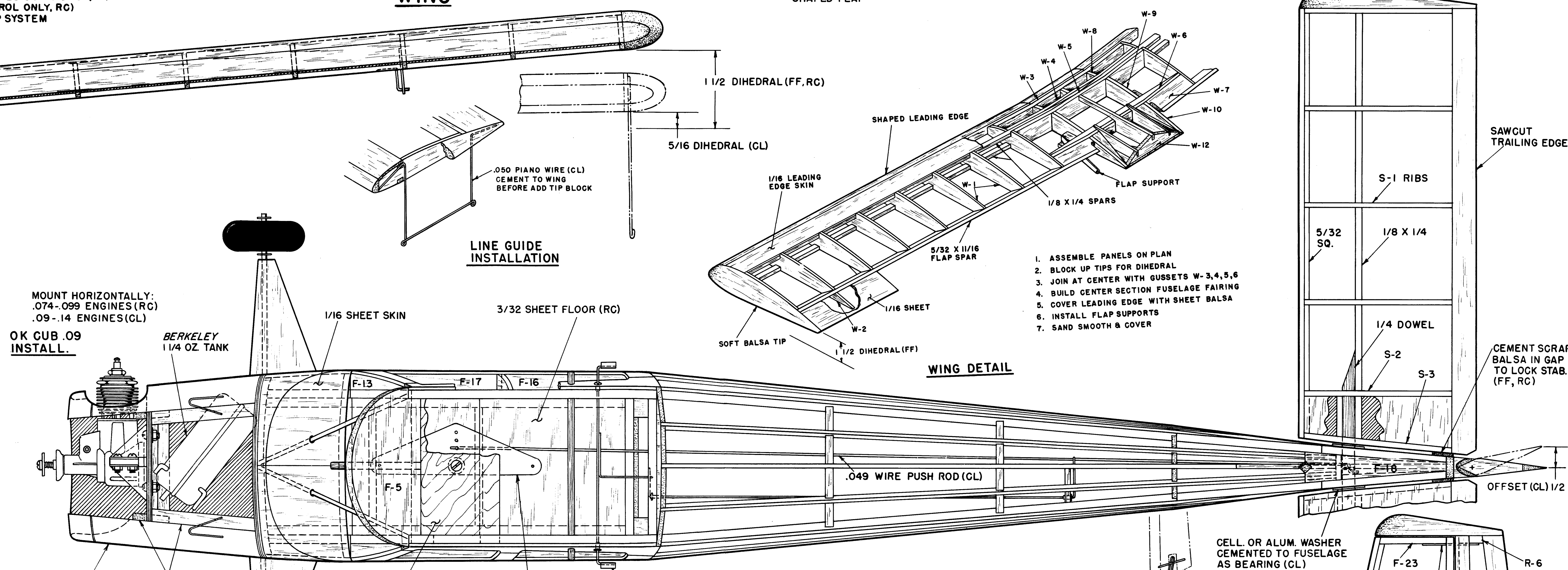


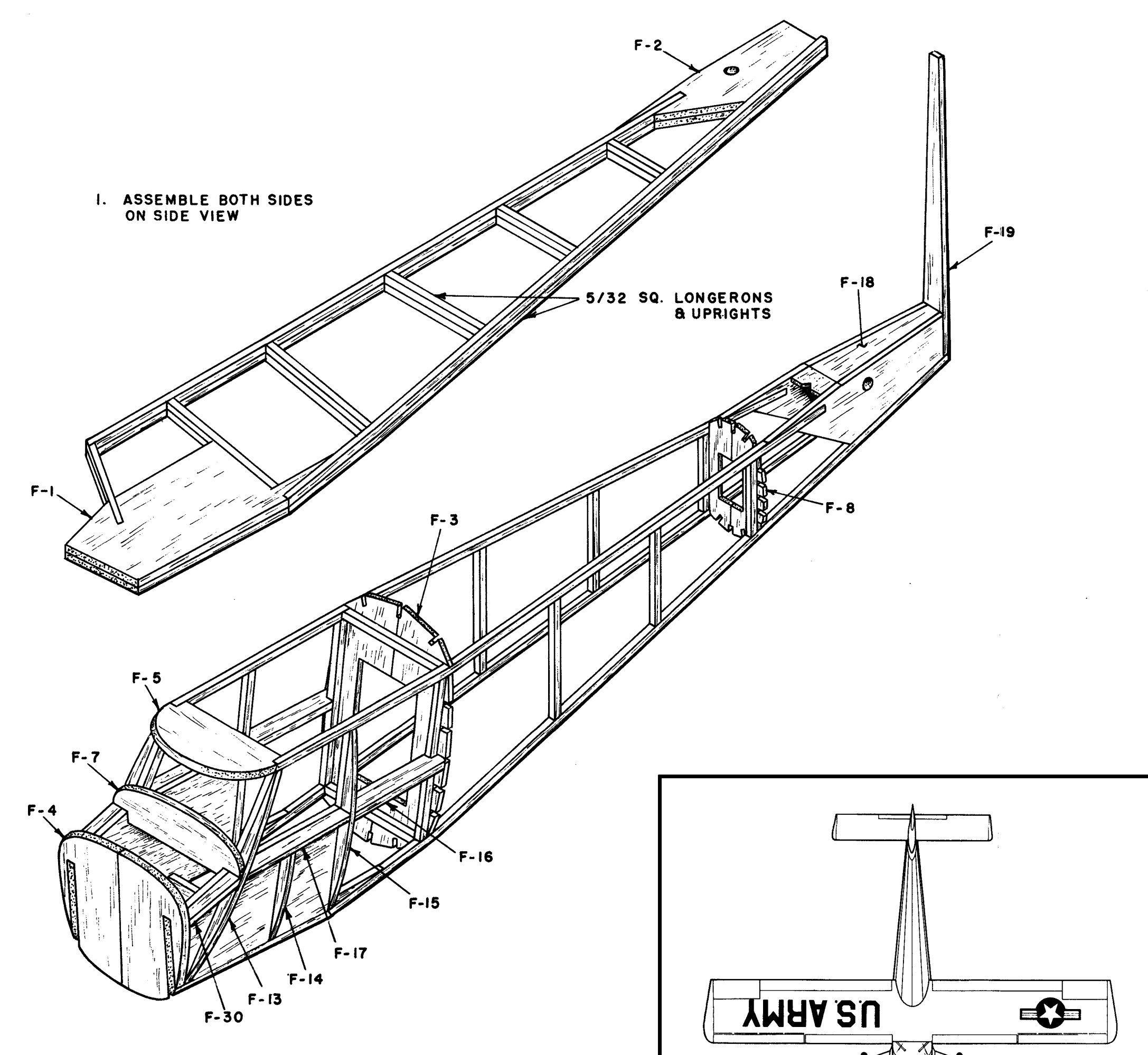
U.S. ARMY



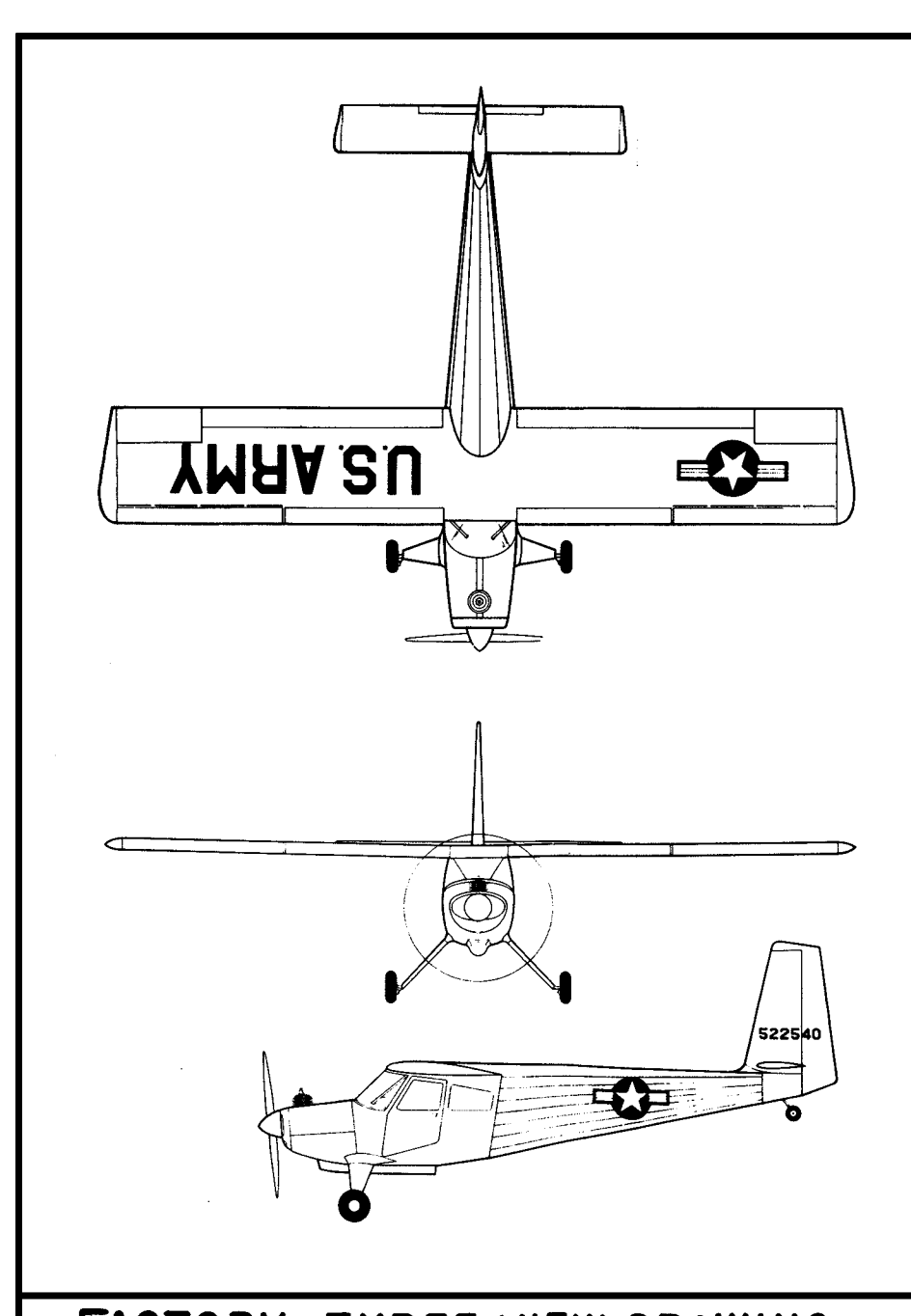
FRONT VIEW



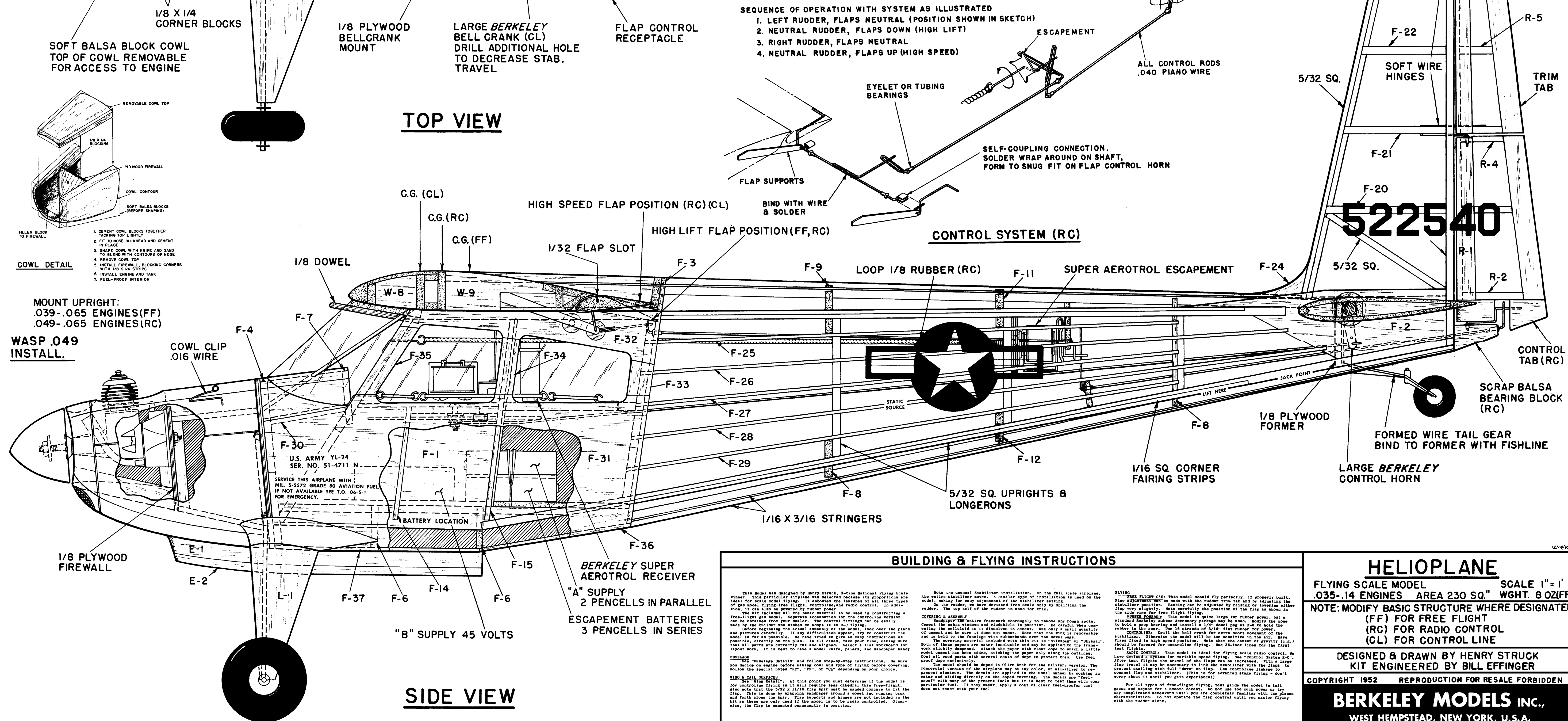
TOP VIEW



FUSELAGE DETAILS



FACTORY THREE-VIEW DRAWING



SIDE VIEW

BUILDING & FLYING INSTRUCTIONS

This model was designed to be flown by a person who has had some experience with model airplanes. It is not recommended that a beginner attempt to fly this model. The model is designed to be flown in a wind tunnel or in a large, open area. It is not recommended that the model be flown in a confined area or in the presence of other people. The model is designed to be flown in a wind tunnel or in a large, open area. It is not recommended that the model be flown in a confined area or in the presence of other people.

NOTES:

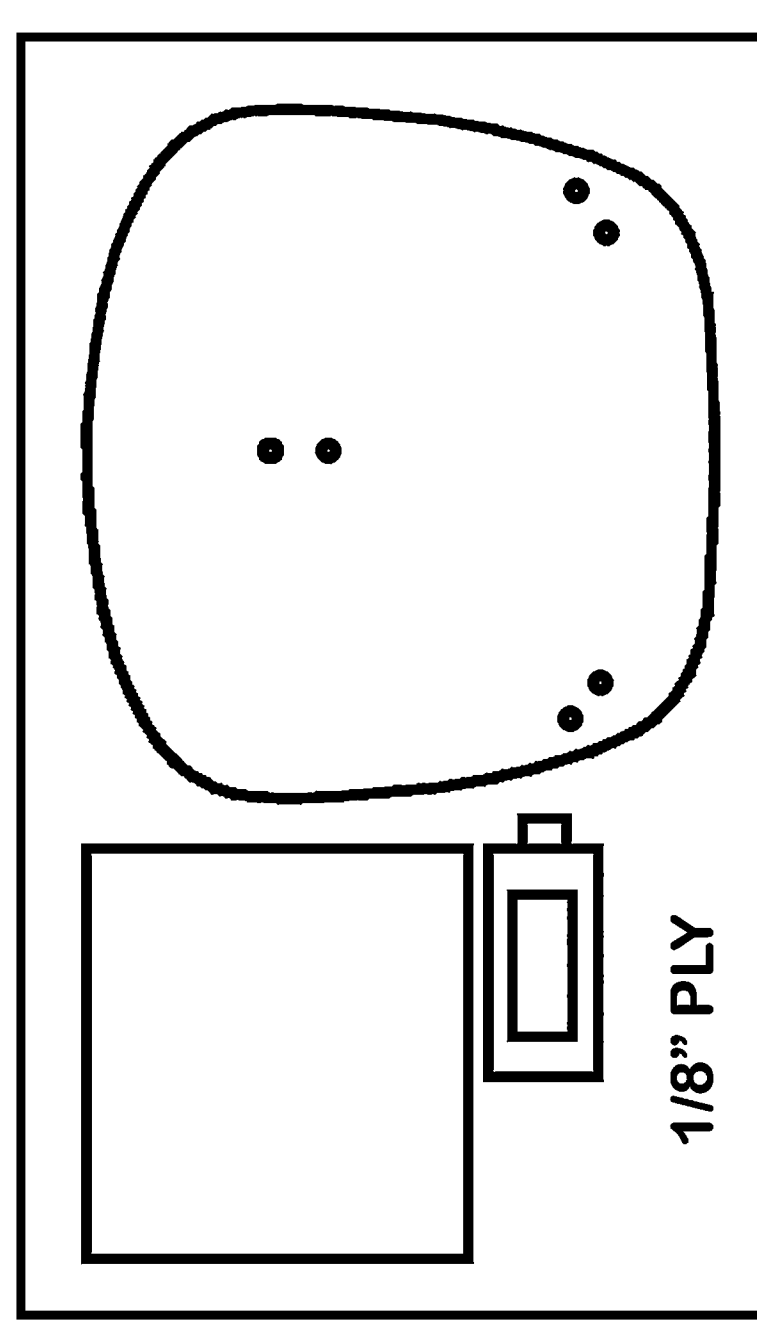
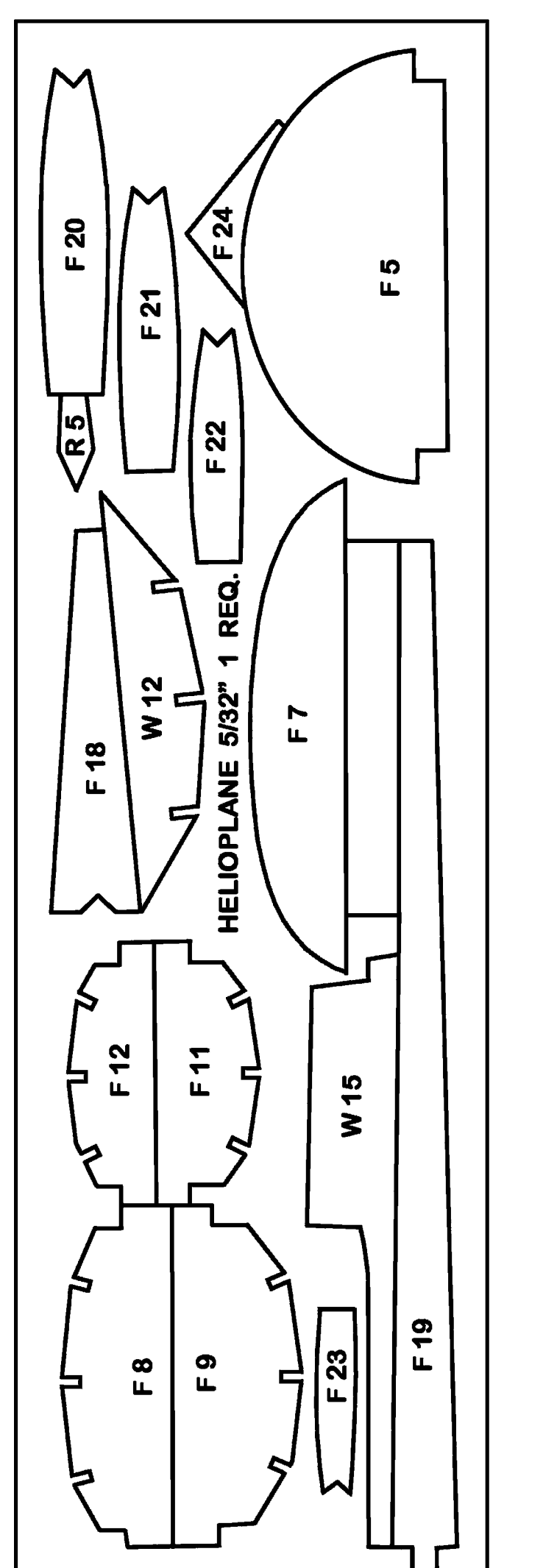
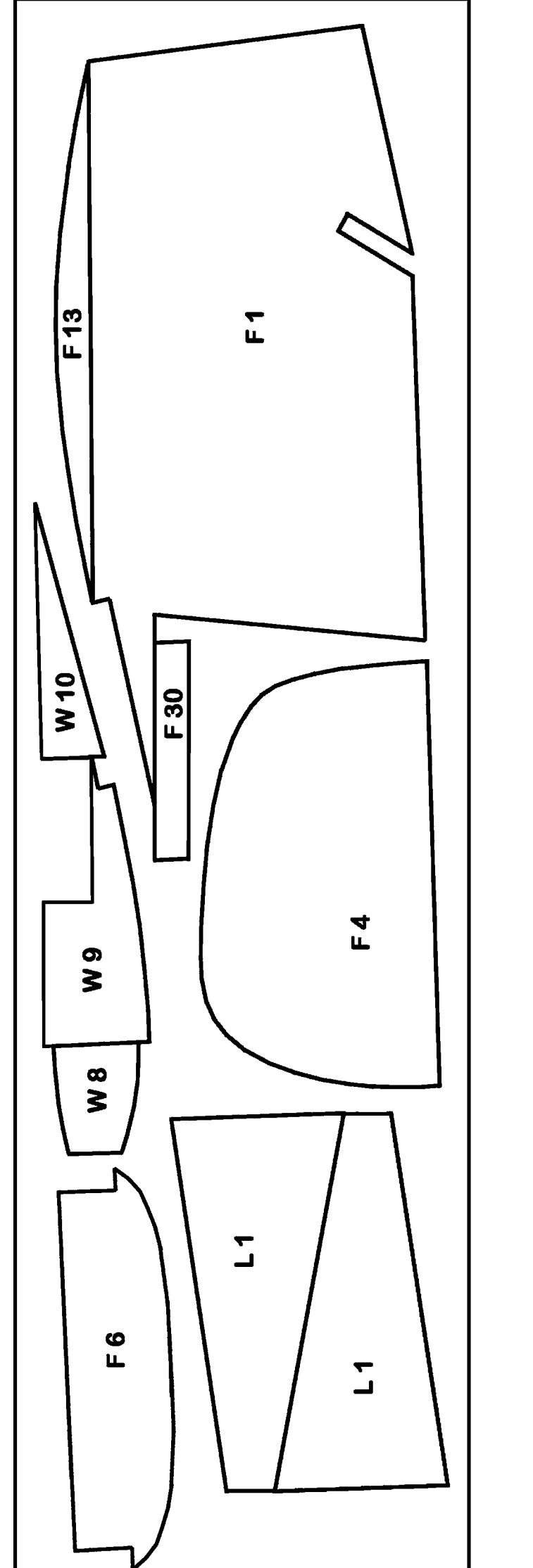
1. THE MODEL IS DESIGNED TO BE FLOWN IN A WIND TUNNEL OR IN A LARGE, OPEN AREA. IT IS NOT RECOMMENDED THAT THE MODEL BE FLOWN IN A CONFINED AREA OR IN THE PRESENCE OF OTHER PEOPLE.

2. THE MODEL IS DESIGNED TO BE FLOWN IN A WIND TUNNEL OR IN A LARGE, OPEN AREA. IT IS NOT RECOMMENDED THAT THE MODEL BE FLOWN IN A CONFINED AREA OR IN THE PRESENCE OF OTHER PEOPLE.

3. THE MODEL IS DESIGNED TO BE FLOWN IN A WIND TUNNEL OR IN A LARGE, OPEN AREA. IT IS NOT RECOMMENDED THAT THE MODEL BE FLOWN IN A CONFINED AREA OR IN THE PRESENCE OF OTHER PEOPLE.

4. THE MODEL IS DESIGNED TO BE FLOWN IN A WIND TUNNEL OR IN A LARGE, OPEN AREA. IT IS NOT RECOMMENDED THAT THE MODEL BE FLOWN IN A CONFINED AREA OR IN THE PRESENCE OF OTHER PEOPLE.

HELIOPLANE
 FLYING SCALE MODEL
 035-14 ENGINES AREA 230 SQ" WEIGHT 8 OZ(FF)
 NOTE: MODIFY BASIC STRUCTURE WHERE DESIGNATED (FF) FOR FREE FLIGHT (RC) FOR RADIO CONTROL (CL) FOR CONTROL LINE
 DESIGNED & DRAWN BY HENRY STRUCK
 KIT ENGINEERED BY BILL EFFINGER
 COPYRIGHT 1952 REPRODUCTION FOR RESALE FORBIDDEN
BERKELEY MODELS INC.
 WEST HEMPSTEAD, NEW YORK, U.S.A.



NOTE:
 THE ABOVE PARTS ARE ALL I COULD OBTAIN SCANS OF. THESE SHOULD BE ENOUGH TO BUILD THE MODEL. IF YOU LOOK CAREFULLY AT THE PLAN YOU CAN FIND MOST PARTS SHOWN. MAKE EXTRA COPIES OF THE PLAN AND CUT THESE OUT OF THE PLAN FOR PART TEMPLATES.
 "PLANEMAN"